

**IQTOUCH**



# IQTOUCH TR1310C Pro

Unleash the Power of Google Workspace

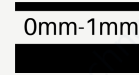




Android 13(16G+256G)  
/Windows 10



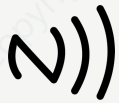
40 Touch  
Points



Zero+ Bonding



Built-in Conference  
Camera(48MP with AI)



NFC Access  
Control



Full function  
USB-C \* 3



BYOD(4K)&  
BYOM



HDMI OUT & Type C OUT  
for Extended Screen



# What is Google EDLA for Interactive Displays?

The Google EDLA (Enterprise Device Licensing Agreement) certification is a program designed to ensure that smart board or interactive display manufacturers offer devices with authentic built-in Google Mobile Services, which enhance the security and functionality of Android devices in various environments, particularly in educational settings.

By being Google EDLA certified, IQTouch TR1310C PRO stands out as a trusted choice for educational institutions. It allows educators to leverage the full power of Google's educational tools, enhancing collaboration and engagement in the classroom.



**01**

## **Teach and Work within the Google Ecosystem**



Effortless access to Google Workspace for Education, allowing educators to utilize tools like Google Classroom, Google Drive, and Google Docs to foster a cohesive digital environment for teaching and learning.



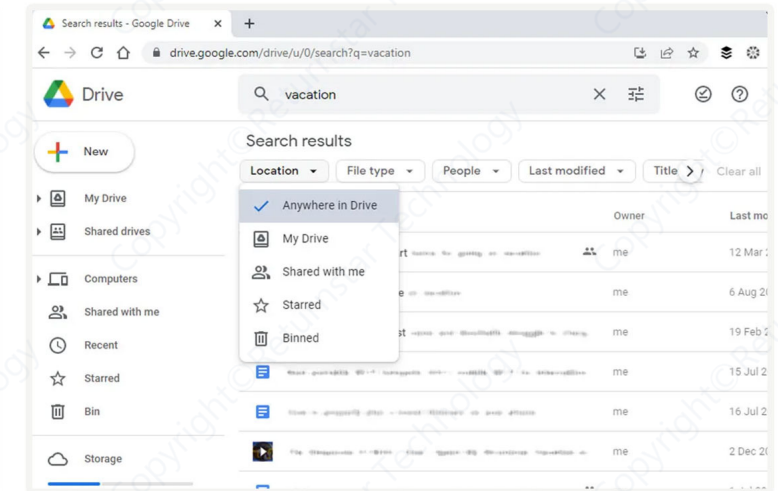
## Google Classroom

A centralized platform for managing classes, assignments, and communication between teachers and students. It allows educators to create, distribute, and grade assignments, fostering a structured learning environment.



## Collaboration Tools

Google Docs, Sheets, and Slides enable real-time collaboration on documents, spreadsheets, and presentations. Multiple users can work simultaneously, making group projects easier and more interactive.



## Google Drive

Teachers and students can easily access resources from their familiar platform, promoting flexible learning and collaboration.

# Extensive App Availability

Enjoy the secure download and installation of a variety of educational apps from the official Google Play Store.





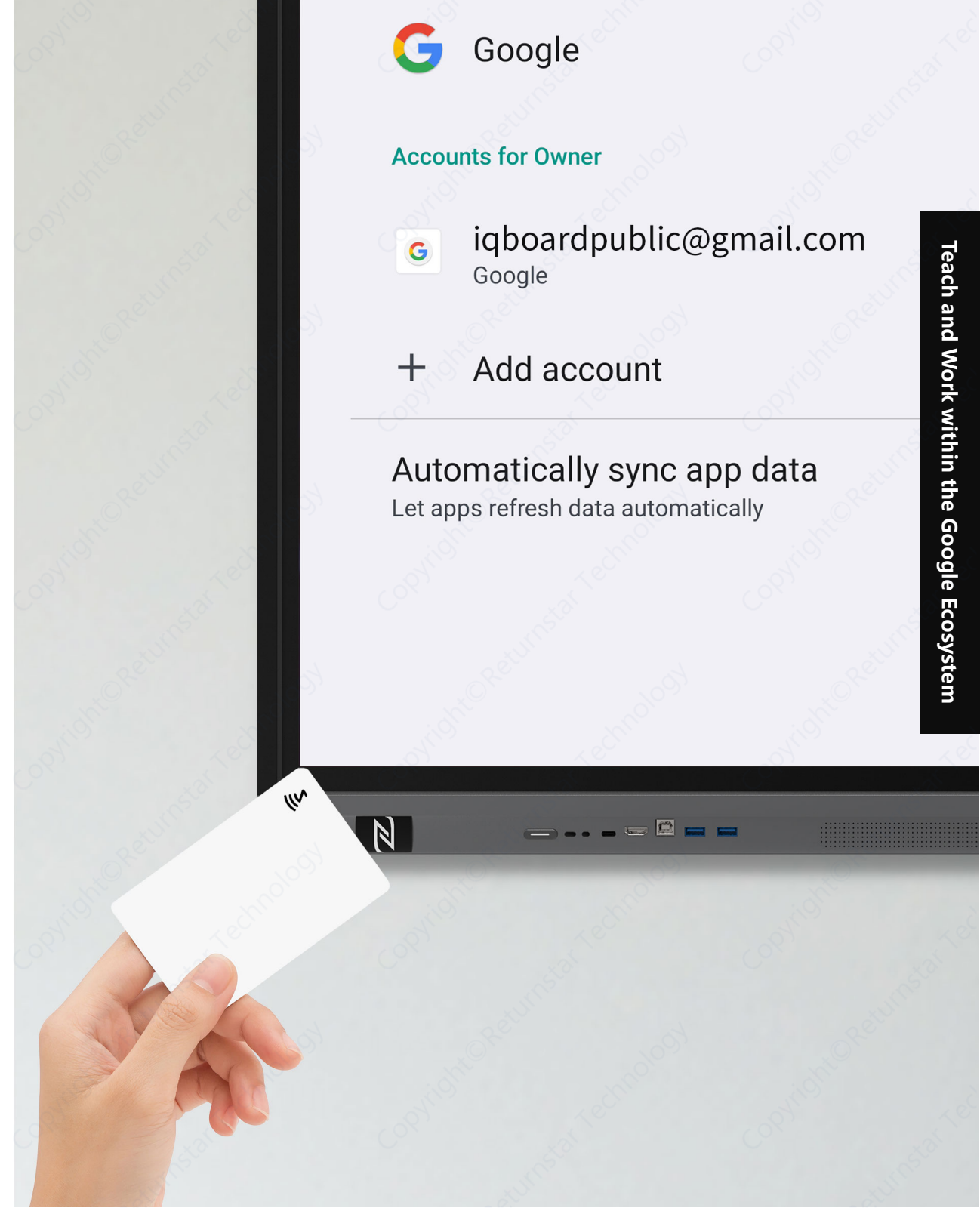


# Google Search at Your Fingertips

Access Google Search directly from the homepage, allowing educators and students to quickly find information, resources, and answers during lessons.

# NFC Binding with Google Account

Log in to your Google account with a simple tap. Enjoy more secure and easier access to your personalized settings and resources instantly, eliminating the need for passwords.







## Robust Security Features

Cutting-edge security features that protect sensitive data and ensure secure access to applications, making it ideal for educational institutions that handle student information.

**02**

**More Brilliance, All the  
Way Through**



# Strong Core Performance

**Octa-core 4\*A76+4\*A55 | 2.4GHz Processor Speed | 16G RAM + 256G ROM**

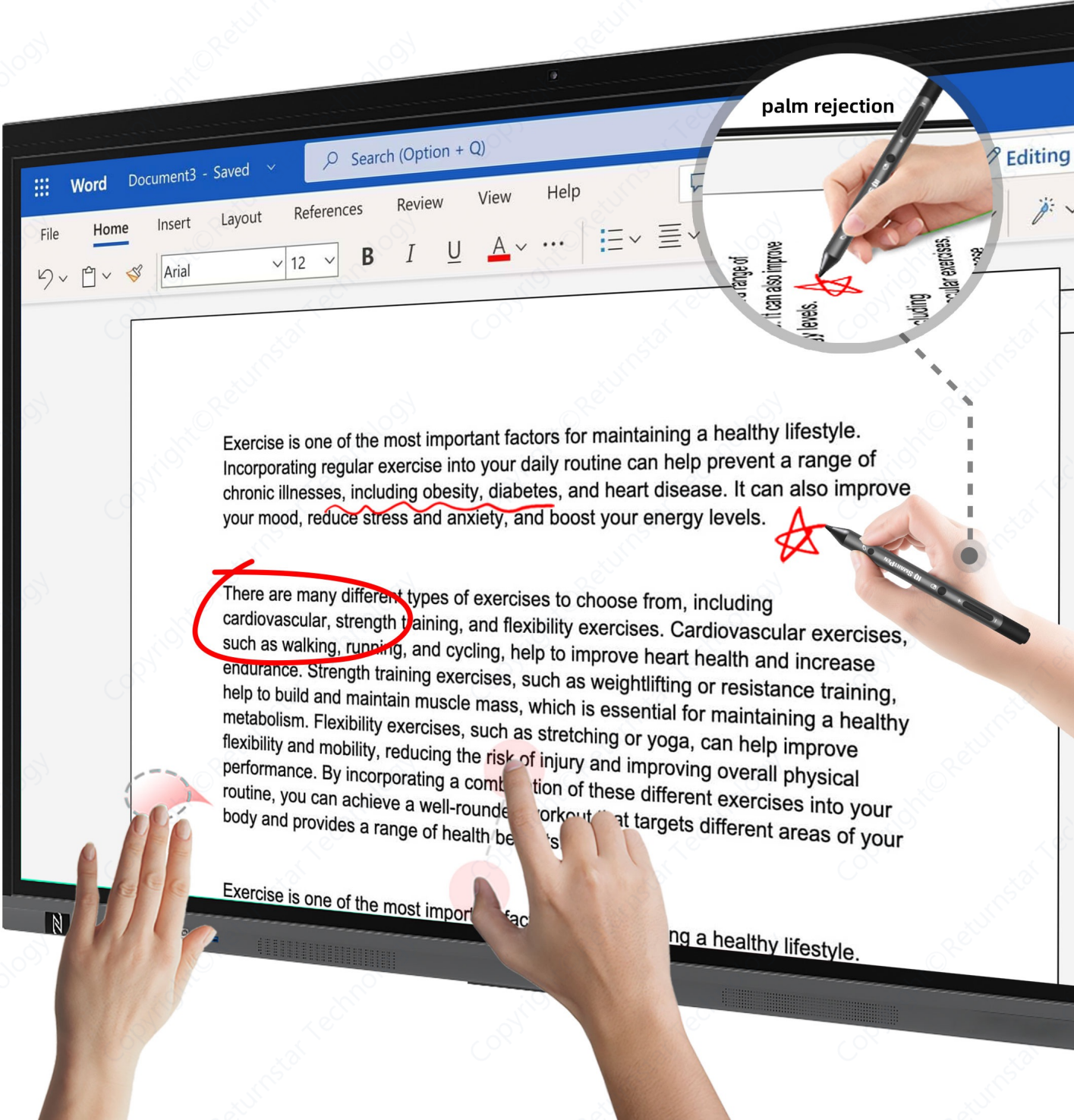
Enjoy fast, efficient, and visually engaging learning experiences with high-performance CPU, which supports seamless multitasking, rapid response times, and smooth multimedia handling, making it ideal for interactive and dynamic classroom environments.





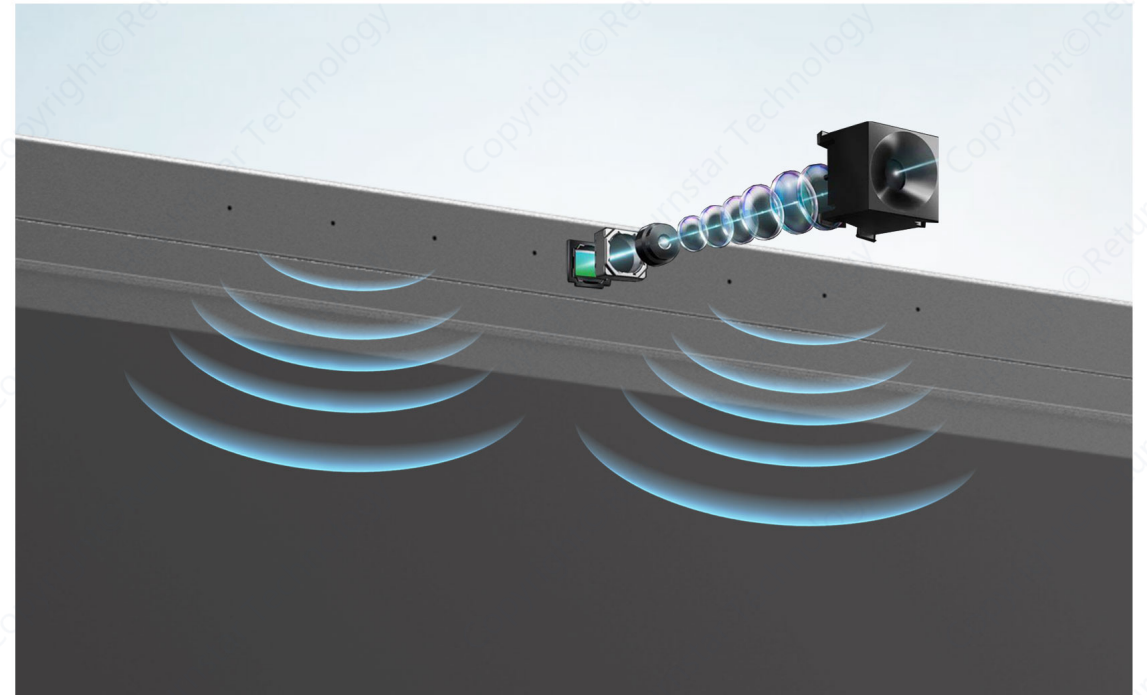
# Precision Perfected for Teaching

Experience unparalleled precision with our ZERO+ bonding technology. Enjoy full-channel 40-point touch control and 20-point writing capabilities, allowing for accurate and detailed annotations. With a minimal touch object size of just 1.5mm, educators can create clear, precise content during lessons. In addition, the palm rejection feature allows you to write with your palm resting on the screen without being misrecognized, ensuring an easy, realistic writing experience.



# Immerse in Sensory Brilliance

Enhance your classroom experience with four powerful 16W speakers that deliver rich, immersive sound. Paired with a 48MP AI camera and an 8-microphone array, our interactive flat panel ensures exceptional audiovisual quality for video conferences and virtual lessons, creating an engaging learning environment.







## Bring Your Own Meeting (BYOM)

Easily connect your personal devices to the interactive display for seamless video conferencing and collaboration. With the BYOM feature, educators and students can use their preferred meeting platforms without any hassle. Whether in the classroom or during virtual meetings, BYOM enhances connectivity and interaction.

# Plug & Play USB-C Connectivity

A single USB-C cable simplifies your setup by enabling two-way touch control, LAN sharing, 100W fast charging, audio, and 4K@60fps video transmission. This compatibility with laptops, tablets, and smartphones ensures that educators can start their presentations effortlessly, reducing setup time and stress.



Sammual College							
Mark Sheet for class A							
S.No.	Name	Physics	Chemistry	Biology	English	Total	Average
1	Emily	45	54	55	43	197	
2	Charles	56	56	65	23	200	
3	Dominic	67	65	34	23	189	
4	Burgess	78	43	23	22	166	
5	Campbell	34	23	54	33	144	
6	Davidson	23	43	34	34	134	
7	Cornish	67	34	23	45	169	
8	Clarkg	43	23	56	43	165	





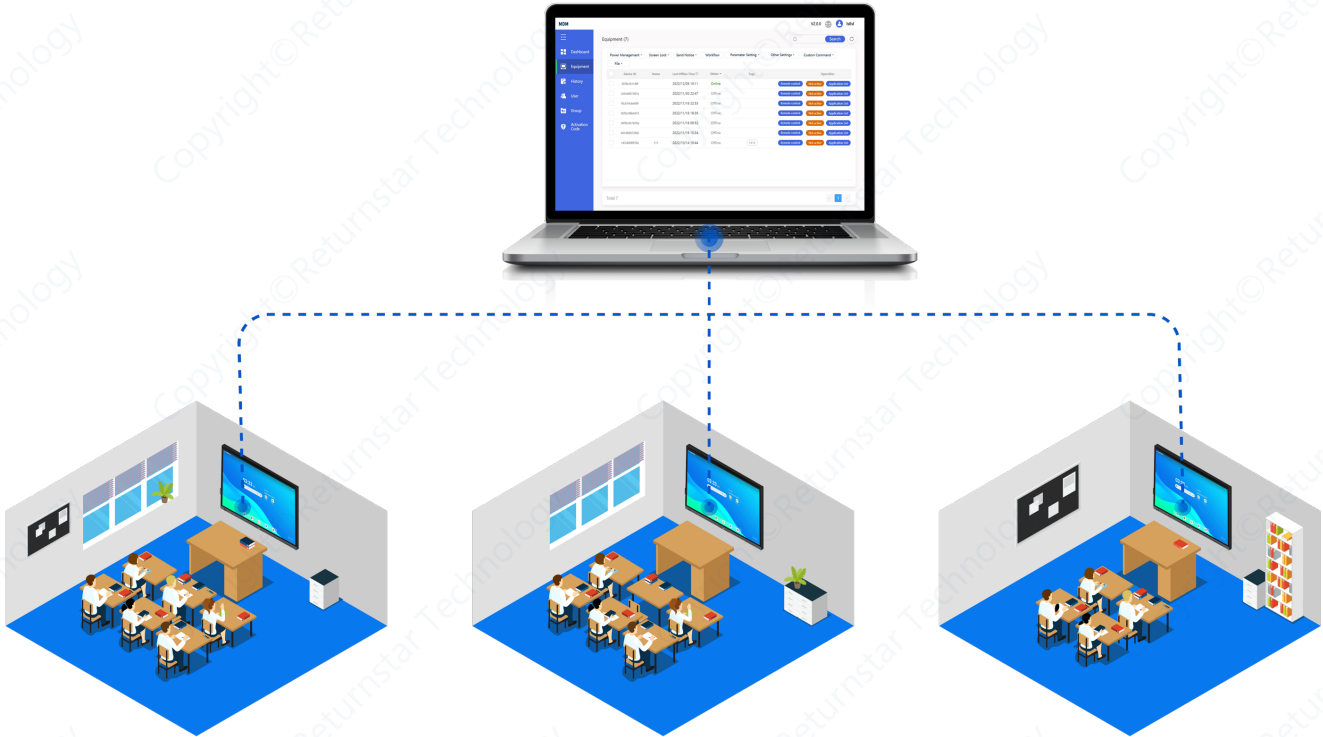
## Support for Extended Screen Display

Connect to external screens using HDMI Out or Type C Out to deliver stunning 4K@60fps images and sound simultaneously. Ideal for larger classrooms or conference rooms, maximizing visibility and enhancing the overall learning experience for all students.



# Simlify devices management in school with MDM

- The platform support with multiple OS,including windows,Android ,IOS
- Actions can be performed on panels individually or on groups of panels
- It will allow you to send immediate or scheduled messages in notification mode with multimedia elements such as images or audio.
- Allows you to create workflows and assign them to a panel or group of panels.



## Soulmates for IQTouch - OPS

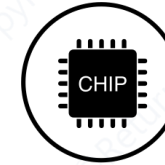


## Use your familiar Windows 10 on the IFP

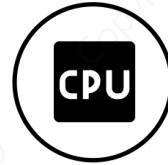
Pre-install IQClass One whiteboard software with  
activated license.



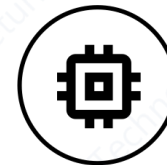
**IQClass One  
software**



**Chipset  
Intel**



**CPU  
Intel®Core i7, 12th Gen**



**Memory  
16GB**



**SSD  
256GB**

## **Soulmates for IQTouch - Mobile Stand**



**Move around your IFP  
freely for flexible use**



Suitable for 55"-86"



# Specifications

Display				
Model	LE065MD	LE075MD	LE086MD	LE098MD
Diagonal Size	65”	75”	86”	98”
Brightness	425cd/m²		450cd/m²	
Dynamic Contrast Ratio			5000:1	
Contrast Ratio			1200: 1	
Panel Type			TFT	
Backlight			Direct LED (DLED)	
Resolution			4K UHD (3840*2160)	
Display Ratio			16:9	
Response Rate			8ms ( typ.)	
Refreshing Frequency			60Hz	
Viewing Angle			178° (H), 178° (V)	
Backlight Life Time			50,000 hrs	
Display Colors			10bit (1.07B)	
Glass	4mm Tempered Glass with Anti-Glare coating (8H)			

Interactivity	
Touch Technology	Infrared
Touch Point	40-point touch; 40-point writing under Windows; 16-point writing under Android
Touch Resolution	32768*32768(px)
Response Rate	<2.0ms(single touch) <6ms(max touch inputs)
Touch Accuracy	≤1mm
Recognition	Finger or pen
Writing Height	2mm
Minimum Touch Object	1.5mm
Supported O.S.	HID Support & Win10/Win8/Win7/Mac OS/Android/Chrome OS/Linux

Front Buttons	
Front Buttons	POWER

Connectivity		
Front	USB3.0(Android&PC)	2
	HDMI IN 2.0	1
	Touch-USB	1
	TYPE-C (USB 2.0&Video 4K@60Hz &Audio&Touch&65W)	1
Input	RJ45(10/100/1000 Mbit/s LAN Share)	1
	HDMI 2.0(4K@60fps)	3
	TYPE-C (USB2.0&Video 4K@60Hz &Audio&Touch&100W)	1
	DP 1.2	1
	VGA	1
	VGA Audio	1
	USB 2.0 Type-A(Android)	1
	USB 3.0 Type-A(Android&PC)	2
	USB 3.0 Type-B(Touch)	3
	RS232	1

Output	HDMI 2.0(4K@60fps)	1
	SPDIF OUT(Optical)	1
	RJ45(10/100/1000 Mbit/s LAN)	1
	EARPHONE(3.5 mm Line Out)	1
	TYPE-C(Video 4K@60Hz &Audio&Touch&5W)	1

Function	
Built-in Speaker	16W* 2+16W*2
Light Sensitivity	YES
Temperature Monitor	YES
Built-in Camera	48M(Built-in Pre -Video 4K AI Camera with Auto Framing & Voice Tracking)
Array Microphone	8 Array microphone (0-10m)
Hotspot	IEEE 802.11 a/b/g/n/ac, IEEE 802.1x, WPA2, and station mode(2.4G/5G Dual-band);
Bluetooth	5.2
WiFi	IEEE 802.11 a/b/g/n/ac/ax, IEEE 802.1x, WPA2, WiFi6 and station mode(2.4G/5G Dual-band);
NFC	NFC

Android	
CPU Framework	4*A76+4*A55
CPU Processor Speed	2.4GHz
GPU	ARM Mali-G610 MP4
RAM	16G
ROM	256G
O.S. Version	13.0
Screensharing	EShare Pro
Device Management	MDM
Document Camera Software	IQView

Environment	
Working Temperature	0°C ~ 40°C
Storage Temperature	-20°C ~ 60°C
Working Humidity	20% ~ 80% RH Non-Condensing
Storage Humidity	20% ~ 90% RH Non-Condensing

OPS (1255U)	
Chipset	Intel
CPU	Intel ® CoRE ™ i7-1255U
Graphics Card	Intel® Iris® Xe Graphics
Memory	16GB
SSD	256GB
Network	Frequency 2.4GHz / 5GHz Standard 802.11 ac/b/g/n/a/ax
Pre-installed Software	IQCLASS ONE, IQVIEW, IQCLICK
Backside Interfaces	1*JAE 80PIN: HDMI2.0 out(4K/60Hz)&DP1.4 out(8K/60Hz)
Front Interfaces	1*HDMI2.0 out 1*DP1.4 out 2*USB 3.2 Gen 2 2*USB2.0 1* RJ45 1*Power 1* Restore 1*Line out 1*Mic in 1*Type-C(USB3.0&Audio&video) 1*Power LED 1*HDD/SSD LED 2*WIFI/BT ANT

Power				
	LE065MD	LE075MD	LE086MD	LE098MD
Voltage	100V~240V, AC 50 - 60Hz			
Maximum Power	≤350W	≤400W	≤450W	≤550W
Standby Power	≤0.5W			



Physical				
	65"	75"	86"	98"
Net Weight (kg)	41±1	52.8±1	66±1	106±1
Gross Weight (kg)	48.9±1	63.6±1	76.2±1	121±1
Product Size (mm)(W*H*D)	1483.4*916.4*115	1705.8*1041.7*115	1952*1180.4*115	2215.8*1330.6*103
Packing Size (mm)(W*H*D)	1630*1050*220	1860*1160*220	2120*1325*220	2525*1700*325
VESA Hole Position(mm)	4-M8 screw hole 500*400	4-M8 screw hole 600*400	4-M8 screw hole 800*400	4-M8 screw hole 1000*400

Language	
OSD	Simplified Chinese, Traditional Chinese, English, Arabic, Spanish, French, Italian, Japanese, Portuguese, Russian, German, Vietnamese, Korean, Polish, Thai, Indonesian, Czech, Swedish, Dutch, Finnish, Danish

Accessories	
Power Cord	1
4K HDMI @60Hz Cable	1
Touch USB Cable	1
USB-C Cable (supports with full features)	1
NFC Card	1
Mobile Stand	1
Remote Controller	1
Colorless Writing Pen	2
Wall Mounting Brackets	1

Certificate
CE, FCC, ROHS, BIS, IEC, WEEEEE, Energy Star, CB, IECEE, TUV Low blue light, ERP

Warranty
Warranty term and upgrade options vary by region. Contact your local reseller or distributor for information.

# THANKS

Returnstar Interactive Technology Group CO., LTD.  
6th Bldg. High-Tech Base. Fuzhou Fujian Prov. China  
0086-591-38202660  
0086-591-38203003  
www.IQBoard.net  
IQBoard@IQBoard.net



STOCK CODE  
**836453**

